

Welcome home

uPVC Entrance Doors



Make an impact

Our uPVC entrance and back doors are designed to match perfectly with our window range to create a co-ordinated and attractive appearance for your home.



Available in a wide range of design options, our residential doors are ideal for use as a back door as well as the main entrance to your home.

KEY DETAILS

Yale high security locking

Double rebated

Energy efficient

Environmentally friendly

10 year warranty

Add a splash of colour

To ensure the perfect match, all our uPVC doors and frames are available in a wide choice of colours.

Creating the look you want has never been easier.



Design choices

Choose from a range of moulded or flat panels, with fully integrated pet entrance options.

Superior sealing

Our doors have superior gaskets, providing protection from the harshest of weather conditions.

Universal rebate

A common rebate detail on all products allows the option to have astragal bar glass decoration.

Security guarantee

All locking systems are guaranteed against mechanical failure for 10 years.





Panel options

From traditional to contemporary, we've the perfect design for your home – which you can customise with your choice of colour and door furniture.



Back Door Bordeaux Cambridge Cornwall Devon



Edwardian Georgian Palermo Toulouse Verona



Jacobean Lisbon Monaco Quebec Victorian



Warwick Windsor Xanthi York



Smooth White White Woodgrain Smooth Ivory Cream Woodgrain Rosewood



Irish Oak Golden Oak AnTeak* Black Woodgrain Chartwell Green



Dark Red* Dark Blue* Anthracite Woodgrain Gale Grey Finesse* Basalt Grey*



Slate Grey* Agate Grey* Silver Grey*



Dual colours
Tailor your doors to your own specification by choosing the same exterior and interior colours, or a combination.

*Longer lead times required

Glazing options

A wide selection of decorative glass to perfectly complement your choice of door.

Whether modern or traditional, you will find a glass style to really make your door stand out.



Energy efficiency

Our residential doors come with multi-chambered profiles as standard, achieving the highest possible BFRC Energy Ratings in the industry.

Tailored to you

Choose the colour and style of your accessories to match your door and personal preferences.



White



Black



Chrome



Gold



Silver



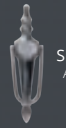
Letterplates



Door knockers/spyholes



Victorian Urn
Available in 5 colours



Slim Victorian Urn
Available in 5 colours



Spyhole
Available in 3 colours



Security built in

All our composite doors come with a high-security multipoint locking mechanism as standard, providing your home with the protection it deserves.

Additional security

TS-007 3-star accredited cylinders are available as an optional extra with all of our door locks, proven to effectively combat against lock snapping and forced entry.



High security

Awarded the Police 'Secured by Design' accreditation, our multipoint locks have been rigorously tested to the very highest security standards.



British built

Production, testing and assembly of all our door locking systems, are carried out in the UK.



Intelligent locking

Intelligent, compact and robust locks, which work perfectly with the design of our doors.



10 year guarantee

The multipoint locking system comes with a 10 year guarantee as standard, providing complete peace of mind.

1

Pre-compression rollers

Ensures smooth operation and maximises weather proofing.

2

Anti-lift pins

Slots into the frame to prevent the door from being moved or lifted.

3

Centre latch and hook

A combined central latch and anti-separation hook create a solid and rigid locking point.

4

Claw hooks

Grips the door sash to the frame for extra strength and solidity.

